

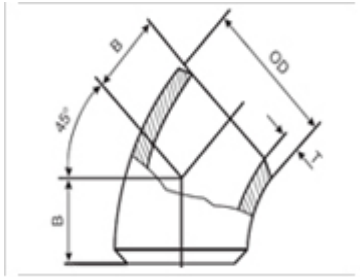


FITTING SUPPLY COMPANY LIMITED

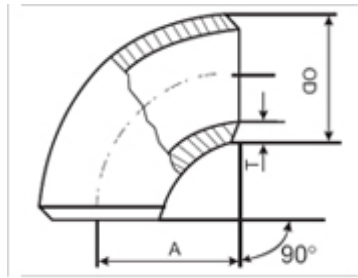
WWW.FITTINGSUPPLY.NET

BUTT WELD FITTINGS

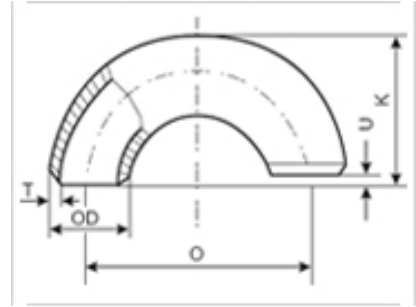
45° Elbow



90° Elbow



180° Elbow

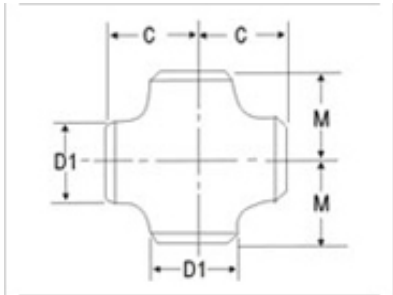
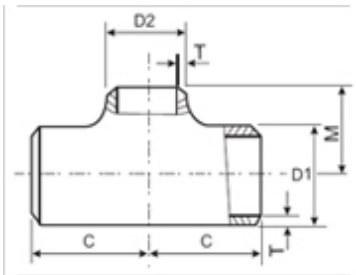
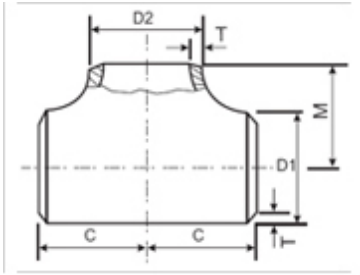


公称通径		端部外径		中心至端面			中心至中心		背面至端面	
				Center to End			Center to Center		Back to Face	
Nominal Diameter		Outside Diameter		45°弯头	90°弯头		180°弯头			
		at Bevel		45° Elbow	90° Elbow		180° Elbow			
DN	NPS	A 系列	B 系列	B	A		O		K	
				长半径	长半径	短半径	长半径	短半径	长半径(A 系列)	短半径(A 系列)
		Series A	Series B	Long Radius	Long Radius	Short Radius	Long Radius	Short Radius	Long Radius	Short Radius
15	1/2	21.3	18	16	38	-	76	-	48	-
20	3/4	26.9	25	19	38	-	76	-	51	-
25	1	33.7	32	22	38	25	76	51	56	41
32	1.1/4	42.4	38	25	48	32	95	64	70	52
40	1.1/2	48.3	45	29	57	38	114	76	83	62
50	2	60.3	57	35	76	51	152	102	106	81
65	2.1/2	76.1(73)	76	44	95	64	190	127	132	100
80	3	88.9	89	51	114	76	229	152	159	121
90	3.1/2	101.6	-	57	133	89	267	178	184	140
100	4	114.3	108	64	152	102	305	203	210	159
125	5	139.7	133	79	190	127	381	254	262	197
150	6	168.3	159	95	229	152	457	305	313	237
200	8	219.1	219	127	305	203	610	406	414	313
250	10	273	273	159	381	254	762	508	518	391
300	12	323.9	325	190	457	305	914	610	619	467
350	14	355.6	377	222	533	356	1067	711	711	533
400	16	406.4	426	254	610	406	1219	813	813	610
450	18	457.2	478	286	686	457	1372	914	914	686
500	20	508	529	318	762	508	1524	1016	1016	762
550	22	559	-	343	838	559	1676	1118	1118	838
600	24	610	630	381	914	610	1829	1219	1219	914
650	26	660	-	406	991	660	1982	1320	-	-
700	28	711	720	438	1067	711	2134	1422	-	-
750	30	762	-	470	1143	762	2286	1524	-	-
800	32	813	820	502	1219	813	2438	1626	-	-
850	34	864	-	533	1295	864	2590	1728	-	-
900	36	914	920	565	1372	914	2744	1828	-	-
950	38	965	-	600	1448	965	2896	1930	-	-
1000	40	1016	1020	632	1524	1016	3048	2032	-	-
1050	42	1067	-	660	1600	1067	3200	2134	-	-
1100	44	1118	1120	695	1676	1118	3352	2236	-	-
1150	46	1168	-	727	1753	1168	3506	2336	-	-
1200	48	1220	1220	759	1829	1219	3658	2440	-	-

Above sizes are in accordance with ASME B16.9, SH3408, SH3409, HG/T21635, HG/T21631, SY/T05010, GB/T12459, GB/T13401.



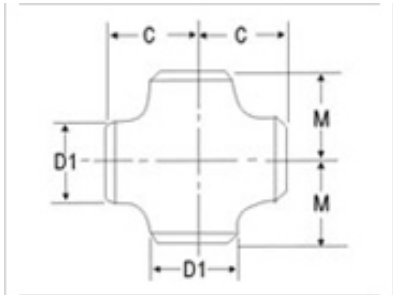
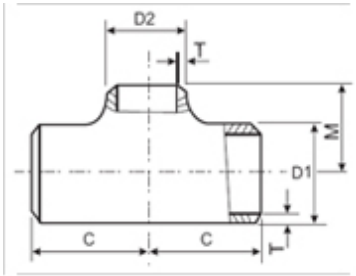
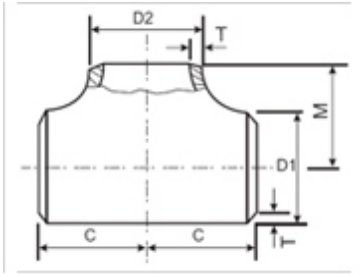
Equal Tee Reducing Tee Equal Cross



公称通径		坡口处外径				中心至端面	
Nominal Diameter		Outside Diameter				Center to End	
		D1		D2			
DN	NPS	A系列	B系列	A系列	B系列	C	M
		Series A	Series B	Series A	Series B		
15×15×15	1/2×1/2×1/2	21.3	18	21.3	18	25	25
15×15×10	1/2×1/2×3/8	21.3	18	17.3	14	25	25
15×15×8	1/2×1/2×1/4	21.3	18	13.7	10	25	25
20×20×20	3/4×3/4×3/4	26.9	25	26.9	25	29	29
20×20×15	3/4×3/4×1/2	26.9	25	21.3	18	29	29
20×20×10	3/4×3/4×3/8	26.9	25	17.3	14	29	29
25×25×25	1×1×1	33.7	32	33.7	32	38	38
25×25×20	1×1×3/4	33.7	32	26.9	25	38	38
25×25×15	1×1×1/2	33.7	32	21.3	18	38	38
32×32×32	1.1/4×1.1/4×1.1/4	42.4	38	42.4	38	48	48
32×32×25	1.1/4×1.1/4×1	42.4	38	33.7	32	48	48
32×32×20	1.1/4×1.1/4×3/4	42.4	38	26.9	25	48	48
32×32×15	1.1/4×1.1/4×1/2	42.4	38	21.3	18	48	48
40×40×40	1.1/2×1.1/2×1.1/2	48.3	45	48.3	45	57	57
40×40×32	1.1/2×1.1/2×1.1/4	48.3	45	42.4	38	57	57
40×40×25	1.1/2×1.1/2×1	48.3	45	33.7	32	57	57
40×40×20	1.1/2×1.1/2×3/4	48.3	45	26.9	25	57	57
40×40×15	1.1/2×1.1/2×1/2	48.3	45	21.3	18	57	57
50×50×50	2×2×2	60.3	57	60.3	57	64	64
50×50×40	2×2×1.1/2	60.3	57	48.3	45	64	60
50×50×32	2×2×1.1/4	60.3	57	42.4	38	64	57
50×50×25	2×2×1	60.3	57	33.7	32	64	51
50×50×20	2×2×3/4	60.3	57	26.9	25	64	44
65×65×65	2.1/2×2.1/2×2.1/2	73	76	73	76	76	76
65×65×50	2.1/2×2.1/2×2	73	76	60.3	57	76	70
65×65×40	2.1/2×2.1/2×1.1/2	73	76	48.3	45	76	67
65×65×32	2.1/2×2.1/2×1.1/4	73	76	42.4	38	76	64
65×65×25	2.1/2×2.1/2×1	73	76	33.7	32	76	57
80×80×80	3×3×3	88.9	89	88.9	89	86	86
80×80×65	3×3×2.1/2	88.9	89	73	76	86	83
80×80×50	3×3×2	88.9	89	60.3	57	86	76



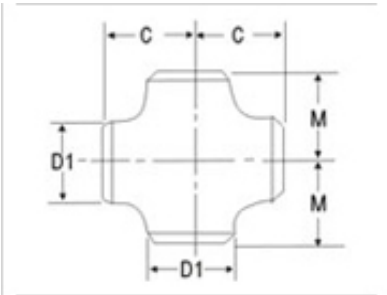
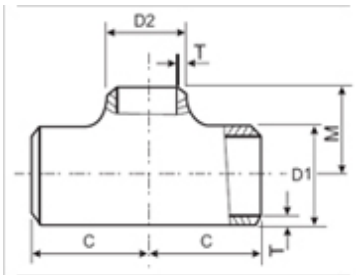
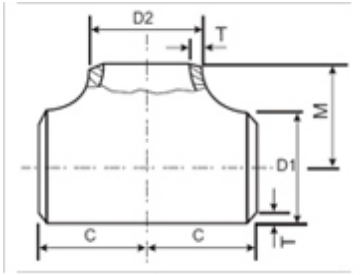
Equal Tee Reducing Tee Equal Cross



公称通径		坡口处外径				中心至端面	
Nominal Diameter		Outside Diameter				Center to End	
		D1		D2			
DN	NPS	A系列	B系列	A系列	B系列	C	M
		Series A	Series B	Series A	Series B		
80×80×40	3×3×1.1/2	88.9	89	48.3	45	86	73
80×80×32	3×3×1.1/4	88.9	89	42.4	38	86	70
90×90×90	3.1/2×3.1/2×3.1/2	101.6	-	101.6	-	95	95
90×90×80	3.1/2×3.1/2×3	101.6	-	88.9	89	95	92
90×90×65	3.1/2×3.1/2×2.1/2	101.6	-	73	76	95	89
90×90×50	3.1/2×3.1/2×2	101.6	-	60.3	57	95	83
90×90×40	3.1/2×3.1/2×1.1/2	101.6	-	48.3	45	95	79
100×100×100	4×4×4	114.3	108	114.3	108	105	105
100×100×90	4×4×3.1/2	114.3	108	101.6	-	105	102
100×100×80	4×4×3	114.3	108	88.9	89	105	98
100×100×65	4×4×2.1/2	114.3	108	73	76	105	95
100×100×50	4×4×2	114.3	108	60.3	57	105	89
100×100×40	4×4×1.1/2	114.3	108	48.3	45	105	86
125×125×125	5×5×5	141.3	133	141.3	133	124	124
125×125×100	5×5×4	141.3	133	114.3	108	124	117
125×125×90	5×5×3.1/2	141.3	-	101.6	-	124	114
125×125×80	5×5×3	141.3	133	88.9	89	124	111
125×125×65	5×5×2.1.2	141.3	133	73	76	124	108
125×125×50	5×5×2	141.3	133	60.3	57	124	105
150×150×150	6×6×6	168.3	159	168.3	159	143	143
150×150×125	6×6×5	168.3	159	141.3	133	143	137
150×150×100	6×6×4	168.3	159	114.3	108	143	130
150×150×90	6×6×3.1/2	168.3	-	101.6	-	143	127
150×150×80	6×6×3	168.3	159	88.9	89	143	124
150×150×65	6×6×2.1/2	168.3	159	73	76	143	121
200×200×200	8×8×8	219.1	219	219.1	219	178	178
200×200×150	8×8×6	219.1	219	168.3	159	178	168
200×200×125	8×8×5	219.1	219	141.4	133	178	162
200×200×100	8×8×4	219.1	219	114.3	108	178	156
200×200×90	8×8×3.1/2	219.1	-	101.6	-	178	152
250×250×250	10×10×10	273	273	273	273	216	216



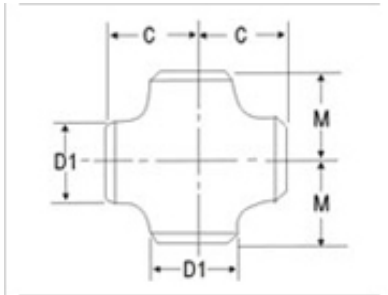
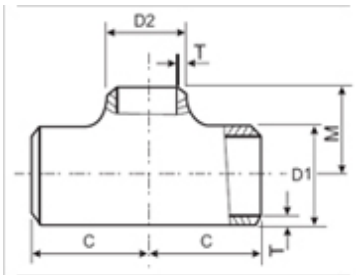
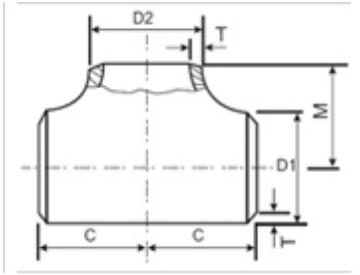
Equal Tee Reducing Tee Equal Cross



公称通径		坡口处外径				中心至端面	
Nominal Diameter		Outside Diameter				Center to End	
		D1		D2			
DN	NPS	A系列	B系列	A系列	B系列	C	M
		Series A	Series B	Series A	Series B		
250×250×200	10×10×8	273	273	219.1	219	216	203
250×250×150	10×10×6	273	273	168.3	159	216	194
250×250×125	10×10×5	273	273	141.3	133	216	191
250×250×100	10×10×4	273	273	114.3	108	216	184
300×300×300	12×12×12	323.9	325	323.9	325	254	254
300×300×250	12×12×10	323.9	325	273	273	254	241
300×300×200	12×12×8	323.9	325	219.1	219	254	229
300×300×150	12×12×6	323.9	325	168.3	159	254	219
300×300×125	12×12×5	323.9	325	141.3	133	254	216
350×350×350	14×14×14	355.6	377	355.6	377	279	279
350×350×300	14×14×12	355.6	377	323.9	325	279	270
350×350×250	14×14×10	355.6	377	273	273	279	257
350×350×200	14×14×8	355.6	377	219.1	219	279	248
350×350×150	14×14×6	355.6	377	168.3	159	279	238
400×400×400	16×16×16	406.4	426	406.4	426	305	305
400×400×350	16×16×14	406.4	426	355.6	377	305	305
400×400×300	16×16×12	406.4	426	323.9	325	305	295
400×400×250	16×16×10	406.4	426	273	273	305	283
400×400×200	16×16×8	406.4	426	219.1	219	305	273
400×400×150	16×16×6	406.4	426	168.3	159	305	264
450×450×450	18×18×18	457	480	457	480	343	343
450×450×400	18×18×16	457	480	406.4	426	343	330
450×450×350	18×18×14	457	480	355.6	377	343	330
450×450×300	18×18×12	457	480	323.9	325	343	321
450×450×250	18×18×10	457	480	273	273	343	308
450×450×200	18×18×8	457	480	219.1	219	343	298
500×500×500	20×20×20	508	530	508	530	381	381
500×500×450	20×20×20	508	530	457	480	381	368
500×500×400	20×20×20	508	530	406.4	426	381	356
500×500×350	20×20×20	508	530	355.6	377	381	356
500×500×300	20×20×20	508	530	323.9	325	381	346



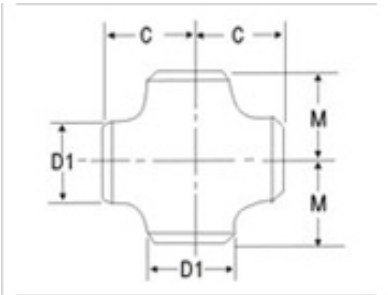
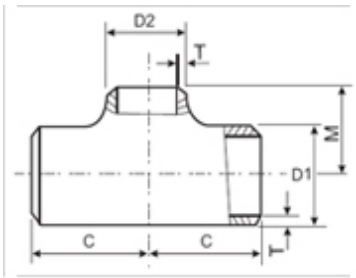
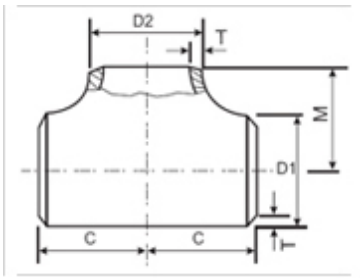
Equal Tee Reducing Tee Equal Cross



公称通径		坡口处外径				中心至端面	
Nominal Diameter		Outside Diameter				Center to End	
		D1		D2			
DN	NPS	A系列	B系列	A系列	B系列	C	M
		Series A	Series B	Series A	Series B		
500×500×250	20×20×20	508	530	273	273	381	333
500×500×200	20×20×20	508	530	219.1	219	381	324
550×550×550	22×22×22	559	-	559	-	419	419
550×550×500	22×22×20	559	-	508	-	419	406
550×550×450	22×22×18	559	-	457	-	419	394
550×550×400	22×22×16	559	-	406.4	-	419	381
550×550×350	22×22×14	559	-	355.6	-	419	381
550×550×300	22×22×12	559	-	323.9	-	419	371
550×550×250	22×22×10	559	-	273	-	419	359
600×600×600	24×24×24	610	630	610	630	432	432
600×600×550	24×24×22	610	-	559	-	432	432
600×600×500	24×24×20	610	630	508	530	432	432
600×600×450	24×24×18	610	630	457	480	432	419
600×600×400	24×24×16	610	630	406.4	426	432	406
600×600×350	24×24×14	610	630	355.6	377	432	406
600×600×300	24×24×12	610	630	323.9	325	432	397
600×600×250	24×24×10	610	630	273	273	432	384
650×650×650	26×26×26	660	-	660	-	495	495
650×650×600	26×26×24	660	-	610	-	495	483
650×650×550	26×26×22	660	-	559	-	495	470
650×650×500	26×26×20	660	-	508	-	495	457
650×650×450	26×26×18	660	-	457	-	495	444
650×650×400	26×26×16	660	-	406.4	-	495	432
650×650×350	26×26×14	660	-	355.6	-	495	432
650×650×300	26×26×12	660	-	323.9	-	495	422
700×700×700	28×28×28	711	720	711	720	521	521
700×700×650	28×28×26	711	-	660	-	521	521
700×700×600	28×28×24	711	720	610	630	521	508
700×700×550	28×28×22	711	-	559	-	521	495
700×700×500	28×28×20	711	720	508	529	521	483



Equal Tee Reducing Tee Equal Cross



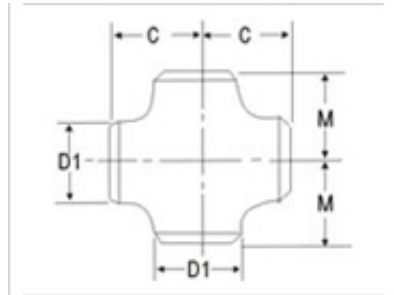
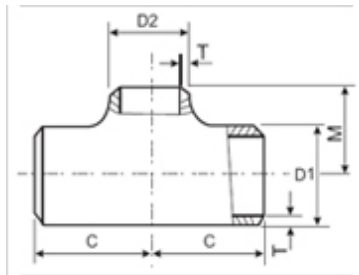
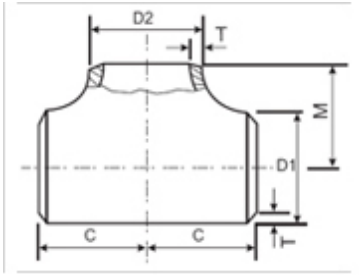
公称通径		坡口处外径				中心至端面	
Nominal Diameter		Outside Diameter				Center to End	
		D1		D2			
DN	NPS	A系列	B系列	A系列	B系列	C	M
		Series A	Series B	Series A	Series B		
700×700×450	28×28×18	711	720	457	478	521	470
700×700×400	28×28×16	711	720	406.4	426	521	457
700×700×350	28×28×14	711	720	355.6	377	521	457
700×700×300	28×28×12	711	720	323.9	325	521	448
750×750×750	30×30×30	762	-	762	-	559	559
750×750×700	30×30×28	762	-	711	-	559	546
750×750×650	30×30×26	762	-	660	-	559	546
750×750×600	30×30×24	762	-	610	-	559	533
750×750×550	30×30×22	762	-	559	-	559	521
750×750×500	30×30×20	762	-	508	-	559	508
750×750×450	30×30×18	762	-	457	-	559	495
750×750×400	30×30×16	762	-	406.4	-	559	483
750×750×350	30×30×14	762	-	355.6	-	559	483
750×750×300	30×30×12	762	-	323.9	-	559	473
750×750×250	30×30×10	762	-	273	-	559	460
800×800×800	32×32×32	813	820	813	820	597	597
800×800×750	32×32×30	813	-	762	-	597	584
800×800×700	32×32×28	813	820	711	720	597	572
800×800×650	32×32×26	813	-	660	-	597	572
800×800×600	32×32×24	813	820	610	630	597	559
800×800×550	32×32×22	813	-	559	-	597	546
800×800×500	32×32×20	813	820	508	529	597	533
800×800×450	32×32×18	813	820	457	478	597	521
800×800×400	32×32×16	813	820	406.4	426	597	508
800×800×350	32×32×14	813	820	355.6	377	597	508
850×850×850	34×34×34	864	-	864	-	635	635
850×850×800	34×34×32	864	-	813	-	635	622
850×850×750	34×34×30	864	-	762	-	635	610
850×850×700	34×34×28	864	-	711	-	635	597
850×850×650	34×34×26	864	-	660	-	635	597
850×850×600	34×34×24	864	-	610	-	635	584



Equal Tee

Reducing Tee

Equal Cross



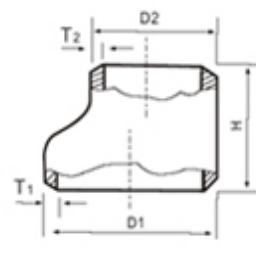
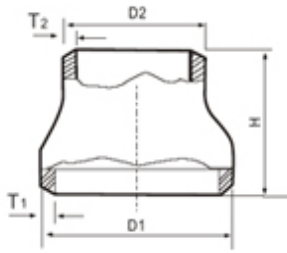
公称通径		坡口处外径				中心至端面	
Nominal Diameter		Outside Diameter				Center to End	
		D1		D2			
DN	NPS	A系列	B系列	A系列	B系列	C	M
		Series A	Series B	Series A	Series B		
850×850×550	34×34×22	864	-	559	-	635	572
850×850×500	34×34×20	864	-	508	-	635	559
850×850×450	34×34×18	864	-	457	-	635	546
850×850×400	34×34×16	864	-	406.4	-	635	533
900×900×900	36×36×36	914	920	914	920	673	673
900×900×850	36×36×34	914	-	864	-	673	660
900×900×800	36×36×32	914	920	813	820	673	648
900×900×750	36×36×30	914	-	762	-	673	635
900×900×700	36×36×28	914	920	711	720	673	622
900×900×650	36×36×26	914	-	660	-	673	622
900×900×600	36×36×24	914	-	610	-	673	610
900×900×550	36×36×22	914	-	559	-	673	597
900×900×500	36×36×20	914	920	508	529	673	584
900×900×450	36×36×18	914	920	457	478	673	572
900×900×400	36×36×16	914	920	406.4	426	673	559

Above sizes are in accordance with ASME B16.9, SH3408, SH3409, HG/T21635, HG/T21631, SY/T05010, GB/T13401.



Concentric Reducer

Eccentric Reducer

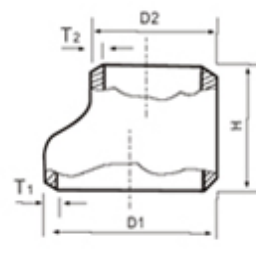
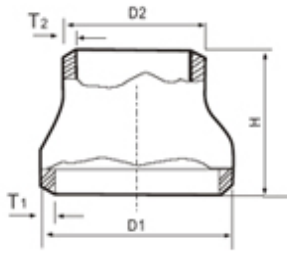


公称通径		坡口处外径		端面至端面的距离
Nominal Diameter		Outside Diameter		End to End
		D1*D2		
DN	NPS	A系列	B系列	H
20×15	3/4×1/2	26.9×21.3	25×18	38
20×10	3/4×3/8	26.9×17.3	25×14	38
25×20	1×3/4	33.7×26.9	32×25	51
25×15	1×1/2	33.7×21.3	32×18	51
32×25	1.1/4×1	42.4×33.7	38×32	51
32×20	1.1/4×3/4	42.4×26.9	38×25	51
32×15	1.1/4×1/2	42.4×21.3	38×18	51
40×32	1.1/2×1.1/4	48.3×42.4	45×38	64
40×25	1.1/2×1	48.3×33.7	45×32	64
40×20	1.1/2×3/4	48.3×26.9	45×25	64
40×15	1.1/2×1/2	48.3×21.3	45×18	64
50×40	2×1.1/2	60.3×48.3	57×45	76
50×32	2×1.1/4	60.3×42.4	57×38	76
50×25	2×1	60.3×33.7	57×32	76
50×20	2×3/4	60.3×26.9	57×25	76
65×50	2.1/2×2	73.0×60.3	76×57	89
65×40	2.1/2×1.1/2	73.0×48.3	76×45	89
65×32	2.1/2×1.1/4	73.0×42.4	76×38	89
65×25	2.1/2×1	73.0×33.7	76×32	89
80×65	3×2.1/2	88.9×73.0	89×76	89
80×50	3×2	88.9×60.3	89×57	89
80×40	3×1.1/2	88.9×48.3	89×45	89
80×32	3×1.1/4	88.9×42.4	89×38	89
90×80	3.1/2×3	101.6×88.9	-	102
90×65	3.1/2×2.1/2	101.6×73.0	-	102
90×50	3.1/2×2	101.6×60.3	-	102
90×40	3.1/2×1.1/2	101.6×48.3	-	102
90×32	3.1/2×1.1/4	101.6×42.4	-	102
100×90	4×3.1/2	114.3×101.6	-	102
100×80	4×3	114.3×88.9	108×89	102
100×65	4×2.1/2	114.3×73.0	108×76	102
100×50	4×2	114.3×60.3	108×57	102
100×40	4×1.1/2	114.3×48.3	108×45	102
125×100	5×4	141.3×114.3	133×108	127
125×90	5×3.1/2	141.3×101.6	-	127



Concentric Reducer

Eccentric Reducer

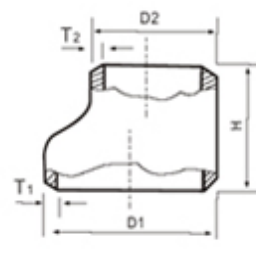
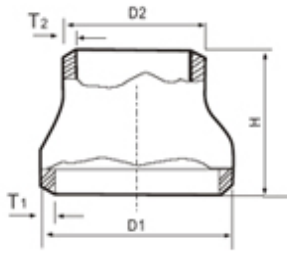


公称通径		坡口处外径		端面至端面的距离
Nominal Diameter		Outside Diameter		End to End
		D1*D2		
DN	NPS	A系列	B系列	H
125×80	5×3	141.3×88.9	133×89	127
125×65	5×2.1/2	141.3×73.0	133×76	127
125×50	5×2	141.3×60.3	133×57	127
150×125	6×5	168.3×141.3	159×133	140
150×100	6×5	168.3×114.3	159×108	140
150×90	6×3.1/2	168.3×101.6	-	140
150×80	6×3	168.3×88.9	159×89	140
150×65	6×2.1/2	168.3×73.0	159×76	140
200×150	8×6	219.1×168.3	219×159	152
200×125	8×5	219.1×141.3	219×133	152
200×100	8×4	219.1×114.3	219×108	152
200×90	8×3.1/2	219.1×101.6	-	152
250×200	10×8	273.0×219.1	273×219	178
250×150	10×6	273.0×168.3	273×159	178
250×125	10×5	273.0×141.3	273×133	178
250×100	10×4	273.0×114.3	273×108	178
300×250	12×10	323.9×273.1	325×273	203
300×200	12×8	323.9×219.1	325×219	203
300×150	12×6	323.9×168.3	325×159	203
300×125	12×5	323.9×141.3	325×133	203
350×300	14×12	355.6×323.9	377×325	330
350×250	14×10	355.6×273.0	377×273	330
350×200	14×8	355.6×219.1	377×219	330
350×150	14×6	355.6×168.3	377×159	330
400×350	16×14	406.4×355.6	426×377	356
400×300	16×12	406.4×323.9	426×325	356
400×250	16×10	406.4×273.0	426×273	356
400×200	16×8	406.4×219.1	426×219	356
450×400	18×16	457×406.4	478×426	381
450×350	18×14	457×355.6	478×377	381
450×300	18×12	457×323.9	478×325	381
450×250	18×10	457×273.0	478×273	381
500×450	20×18	508×457	529×478	508
500×400	20×16	508×406.4	529×426	508
500×350	20×14	508×355.6	529×377	508



Concentric Reducer

Eccentric Reducer

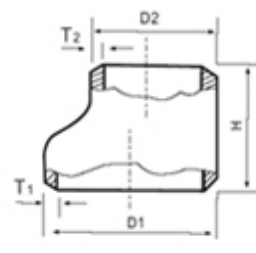
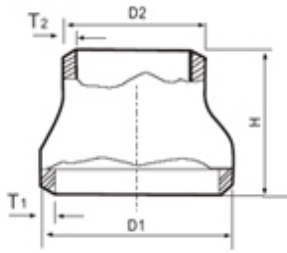


公称通径		坡口处外径		端面至端面的距离
Nominal Diameter		Outside Diameter		End to End
		D1*D2		
DN	NPS	A系列	B系列	H
500×300	20×12	508×323.9	529×325	508
550×500	22×20	559×508	-	508
550×450	22×18	559×457	-	508
550×400	22×16	559×406.4	-	508
550×350	22×14	559×355.6	-	508
600×550	24×22	610×559	-	508
600×500	24×20	610×508	630×529	508
600×450	24×18	610×457	630×478	508
600×400	24×16	610×406.4	630×426	508
650×600	26×24	660×610	-	610
650×550	26×22	660×559	-	610
650×500	26×20	660×508	-	610
650×450	26×18	660×457	-	610
700×650	28×26	711×660	-	610
700×600	28×24	711×610	720×630	610
700×550	28×22	711×559	-	610
700×500	28×20	711×508	720×530	610
750×700	30×28	762×711	-	610
750×650	30×26	762×660	-	610
750×600	30×24	762×610	-	610
750×550	30×22	762×559	-	610
800×750	32×30	813×762	-	610
800×700	32×28	813×711	820×720	610
800×650	32×26	813×660	-	610
800×600	32×24	813×610	820×630	610
850×800	34×32	864×813	-	610
850×750	34×30	864×762	-	610
850×700	34×28	864×711	-	610
850×650	34×26	864×660	-	610
900×850	36×34	914×864	-	610
900×800	36×32	914×813	920×820	610
900×750	36×30	914×762	-	610
900×700	36×28	914×711	920×720	610
950×900	38×36	965×914	-	610
950×850	38×34	965×864	-	610



Concentric Reducer

Eccentric Reducer

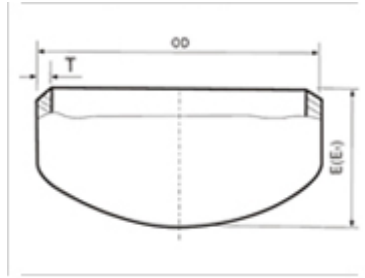


公称通径		坡口处外径		端面至端面的距离
Nominal Diameter		Outside Diameter		End to End
		D1*D2		
DN	NPS	A系列	B系列	H
950×800	38×32	965×813	-	610
950×750	38×30	965×762	-	610
1000×950	40×38	1016×965	-	610
1000×900	40×36	1016×914	1020×920	610
1000×850	40×34	1016×864	-	610
1000×800	40×32	1016×813	1020×820	610
1050×1000	42×40	1067×1016	-	610
1050×950	42×38	1067×965	-	610
1050×900	42×36	1067×914	-	610
1050×850	42×34	1067×864	-	610
1100×1050	44×42	1118×1067	-	610
1100×1000	44×40	1118×1016	1120×1020	610
1100×950	44×38	1118×965	-	610
1100×900	44×36	1118×914	1220×920	610
1150×1100	46×44	1168×1118	-	711
1150×1050	46×42	1168×1067	-	711
1150×1000	46×40	1168×1016	-	711
1150×950	46×38	1168×965	-	711
1200×1150	48×46	1220×1168	-	711
1200×1100	48×44	1220×1118	1220×1120	711
1200×1050	48×42	1220×1067	-	711
1200×1000	48×40	1220×1016	1220×1020	711

Above sizes are in accordance with ASME B16.9, SH3408, SH3409, HG/T21635, HG/T21631, SY/T05010, GB/T13401.



Cap

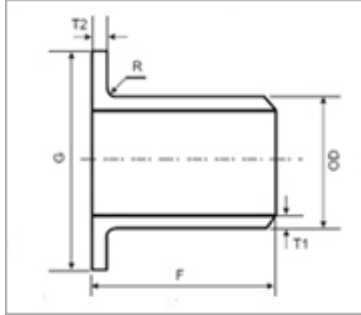


公称通径		端部外径 D		背部至端面的距离		
Nominal Diameter		Outside Diameter at Bevel		Back to End		
DN	NPS	A 系列	B 系列	E	长度E时极限厚度	E1
		Series A	Series B		T	
15	1/2	21.3	18	25	4.57	25
20	3/4	26.9	25	25	3.81	25
25	1	33.7	32	38	4.57	38
32	1.1/4	42.4	38	38	4.83	38
40	1.1/2	48.3	45	38	5.08	38
50	2	60.3	57	38	5.59	44
65	2.1/2	76.1(73)	76	38	7.11	51
80	3	88.9	89	51	7.62	64
90	3.1/2	101.6	-	64	8.13	76
100	4	114.3	108	64	8.64	76
125	5	139.7	133	76	9.65	89
150	6	168.3	159	89	10.92	102
200	8	219.1	219	102	12.7	127
250	10	273	273	127	12.7	152
300	12	323.9	325	152	12.7	178
350	14	355.6	377	165	12.7	191
400	16	406.4	426	178	12.7	203
450	18	457.2	478	203	12.7	229
500	20	508	529	229	12.7	254
550	22	559	-	254	12.7	254
600	24	610	630	267	12.7	305
650	26	660	-	267	-	-
700	28	711	720	267	-	-
750	30	762	-	267	-	-
800	32	813	820	267	-	-
850	34	864	-	267	-	-
900	36	914	920	267	-	-
950	38	965	-	305	-	-
1000	40	1016	1020	305	-	-
1050	42	1067	-	305	-	-
1100	44	1118	1120	343	-	-
1150	46	1168	-	343	-	-
1200	48	1220	1220	343	-	-

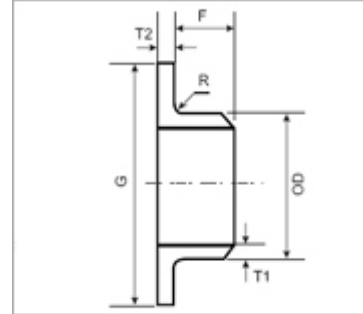
Above sizes are in accordance with ASME B16.9, SH3408, SH3409, HG/T21635, HG/T21631, SY/T05010, GB/T13401.



Lap Joint Stud End



Long Pattern



Short Pattern

公称通径		短节外径	接管长度F		搭接外径	圆角半径	
Nominal Diameter		Outside Diameter	Length		Diameter of Lap Size	R	
DN	NPS	OD	长型 LP	短型 SP		A Max	B Max
15	1/2	21.3	76	51	35	3	0.75
20	3/4	26.7	76	51	43	3	0.75
25	1	33.4	102	51	51	3	0.75
32	1.1/4	42.4	102	51	64	5	0.75
40	1.1/2	48.3	102	51	73	6	0.75
50	2	60.3	152	64	92	8	0.75
65	2.1/2	73	152	64	105	8	0.75
80	3	88.9	152	64	127	10	0.75
90	3.1/2	101.6	152	76	140	10	0.75
100	4	114.3	152	76	157	11	0.75
125	5	141.3	203	76	186	11	1.5
150	6	168.3	203	89	216	13	1.5
200	8	219.1	203	102	270	13	1.5
250	10	273.1	254	127	324	13	1.5
300	12	323.9	254	152	381	13	1.5
350	14	355.6	305	152	413	13	1.5
400	16	406.4	305	152	470	13	1.5
450	18	457.2	305	152	533	13	1.5
500	20	508	305	152	584	13	1.5
550	22	559	305	152	641	13	1.5
600	24	610	305	152	692	13	1.5

Above sizes are in accordance with ASME B16.9, MSS SP-43.